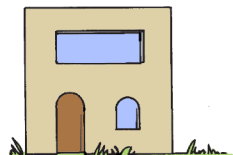
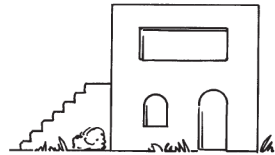


Joseph took Mary and Jesus back home, to the district of Galilee. What town did they settle in?

Write these words in alphabetical order in the shapes below. Write the letters from the circles in order on the lines at the bottom.

- place
- crown
- ~~angel~~
- south
- apple
- where
- beach
- azure

A	N	G	E	L
○	□	□	□	□
□	○	□	□	□
□	□	○	□	□
□	○	□	□	□
□	□	□	□	○
□	□	□	○	□
□	○	□	□	□



N \_\_\_\_\_

# Children's Worship Bulletin™

Ages 7+

January 1, 2023 • Matthew 2:13-23

## Joseph Takes Mary and Jesus to Egypt

An angel appeared to Joseph in a dream.  
What was his message?

The words below are written backward, right to left. Rewrite them correctly on the lines.



ekat ,pu teG"  
dna dlihC eht  
rehtom siH  
ot epacse dna  
doreH rof ,uoy llet I litnu ereht yatS .tpygE  
".miH llik ot dlihC eht rof hcraes ot gniog si

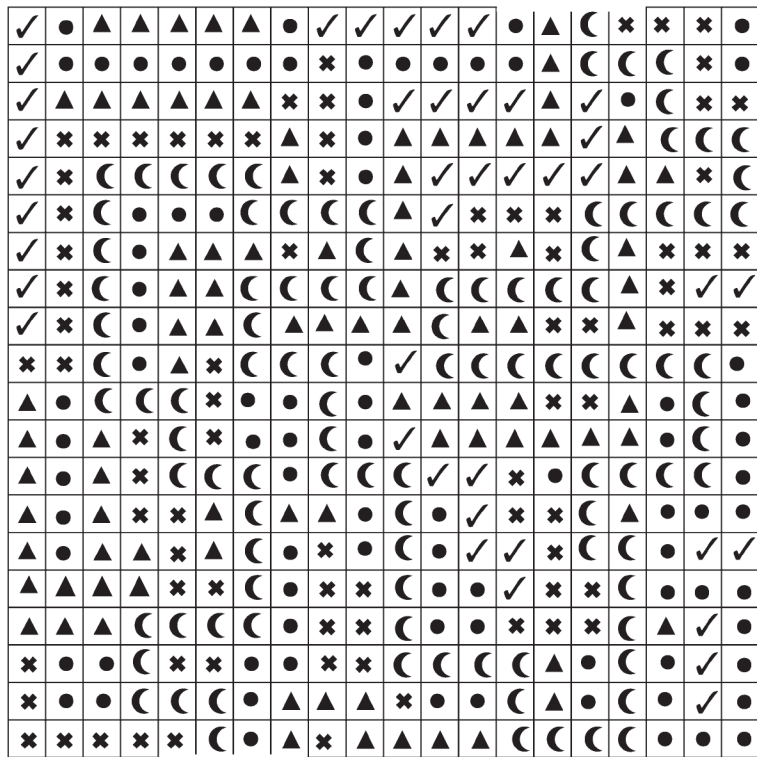
“ \_\_\_\_\_ , \_\_\_\_\_ \_\_\_\_\_ \_\_\_\_\_ \_\_\_\_\_  
 \_\_\_\_\_  
 \_\_\_\_\_ ,  
 \_\_\_\_\_  
 \_\_\_\_\_ ”

Joseph took Mary and Jesus by night to Egypt.

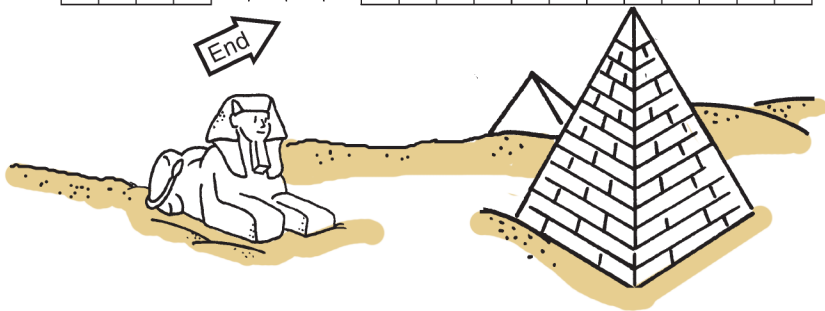
Find the path of shapes that reaches Egypt. You may make only straight moves, no diagonal ones.



Begin



End



After Herod died, an angel of the Lord again appeared to Joseph in a dream. What did the angel say this time?

Use this list to add the missing parts to the words below.

wh\_\_\_    we\_\_\_    \_\_\_et    \_\_\_nd  
 de\_\_\_    mo\_\_\_    Is\_\_\_    th\_\_\_  
 try\_\_\_    \_\_\_ke    ta\_\_\_    Chi\_\_\_  
 \_\_\_ld    u\_\_\_    \_\_\_fe    g\_\_\_

“G\_\_\_ \_\_\_p, \_\_\_ke the Chi\_\_\_ and His  
 \_\_\_ther and \_\_\_o to the la\_\_\_ of  
 \_\_\_rael, for \_\_\_ose \_\_\_o \_\_\_re \_\_\_ing  
 to ta\_\_\_ the \_\_\_ld’s li\_\_\_ are \_\_\_ad.”

